



105ah & 125ah Kit Battery Instructions

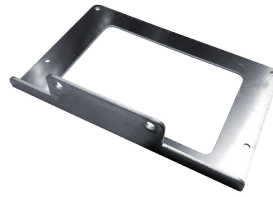
INCLUDED IN THIS KIT



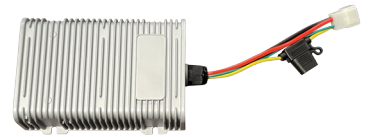
105ah or 125ah Battery
(H1-002) & (H1-003)



20amp Can Charger
(H1-008)



Charger Bracket
(H1-019)



48v-12v Converter
(G1-004)



State of Charge Display
(H1-017)



Display Mount
(H1-018)



Wall Charger
(H1-016)



Sierra Style Charge Cord
(H1-034)



Can Cable Extension
(H1-023)



Can Cable
(H1-009)



Battery to Charger Cable
(H1-011)



4-Pin Display Cable
(H1-013)



8-Pin Display Cable
(H1-014)



Sierra Lithium Plate
(H1-029)



Sierra Plug will fit
Precedent/Tempo
(H1-035)



Sierra Plug will fit
E-Z-GO TXT
(H1-036)



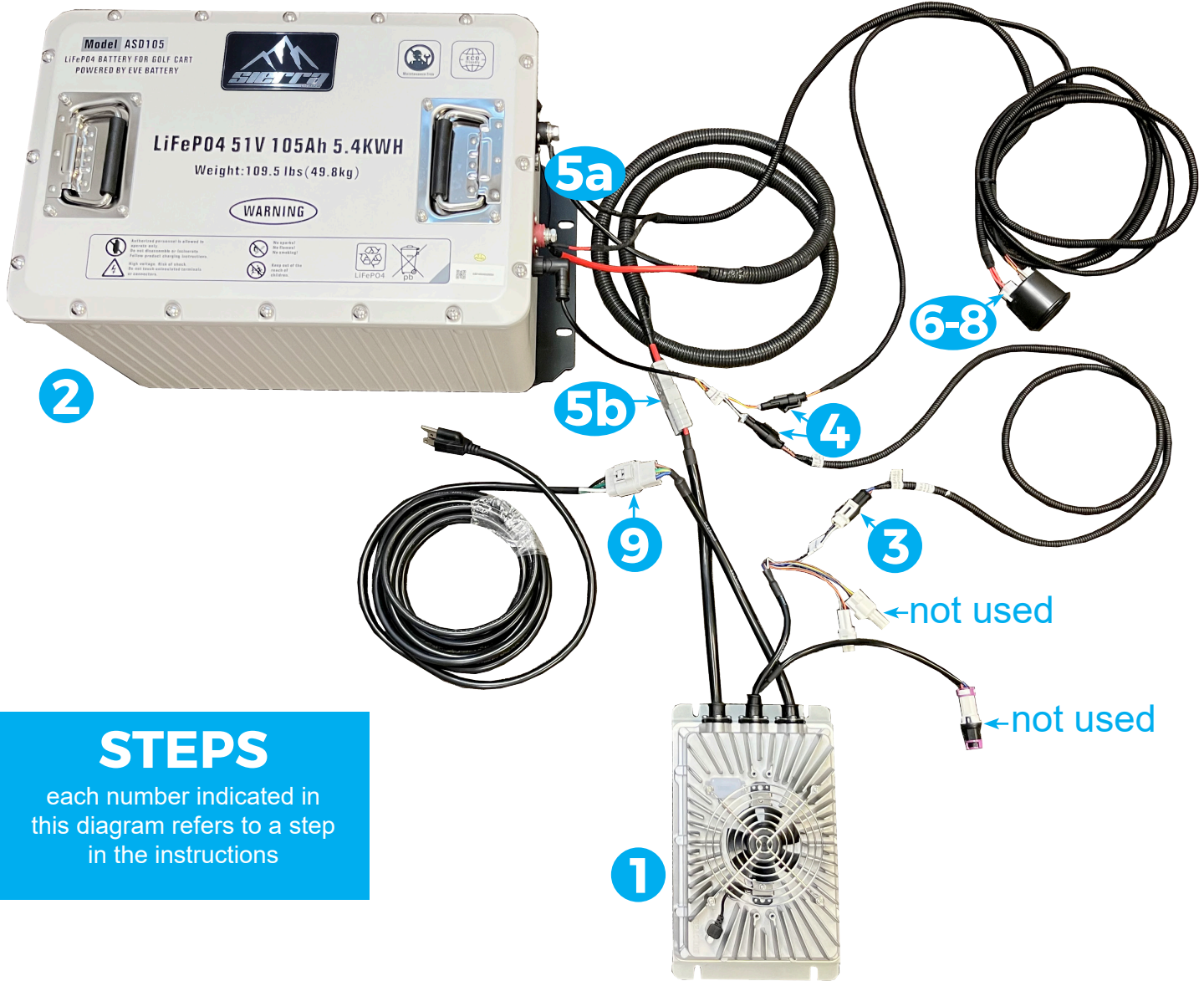
Sierra Plug will fit
E-Z-GO RXV
(H1-037)



Sierra Plug will fit
Yamaha Drive
(H1-038)

Battery Installation

INSTALLATION INSTRUCTIONS



STEPS

each number indicated in this diagram refers to a step in the instructions

MOUNTING OPTIONS WILL FIT:

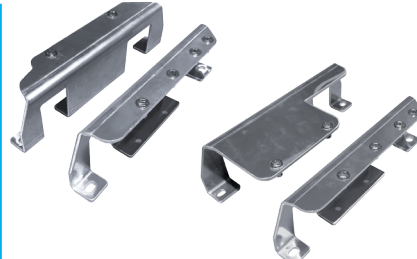


Club Car Bracket
(Precedent, Onward, Tempo)
(H1-020)

**fits carts with six 8V bolt batteries only*



E-Z-GO Bracket
(TXT)
(H1-021)



E-Z-GO Bracket (RXV)
105ah (H1-026)
125ah (H1-027)

**fits carts with six 8V bolt batteries only*



Yamaha Bracket
(Drive G29/Drive 2)
(H1-022)

IMPORTANT: Make sure the battery is off during installation.



ON (LED light)



OFF (no LED light)

STEP 1

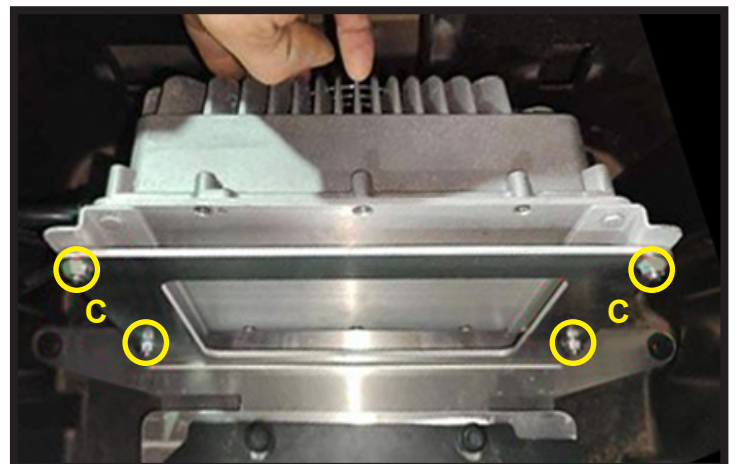
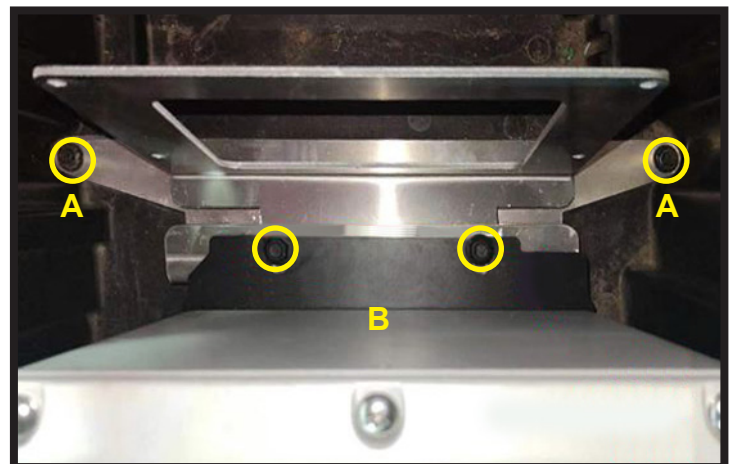
Ensure the key is in the OFF position and the cart is in TOW mode.
Mount cart specific bracket to the vehicle.

CLUB CAR

(A) 105ah and 125ah for Club Car should mount with tabs out as shown using factory hardware.

(B) Attach the battery and charger bracket to the Club Car mount as shown using the supplied 10mmx30mm hardware.

(C) Attach charger to the charger bracket using 6mm hardware.



E-Z-GO TXT

(A) 105ah battery mounts you will need to drill 4 holes using a 3/8" drill bit. These holes will be 32 inches apart and centered on the battery tray.

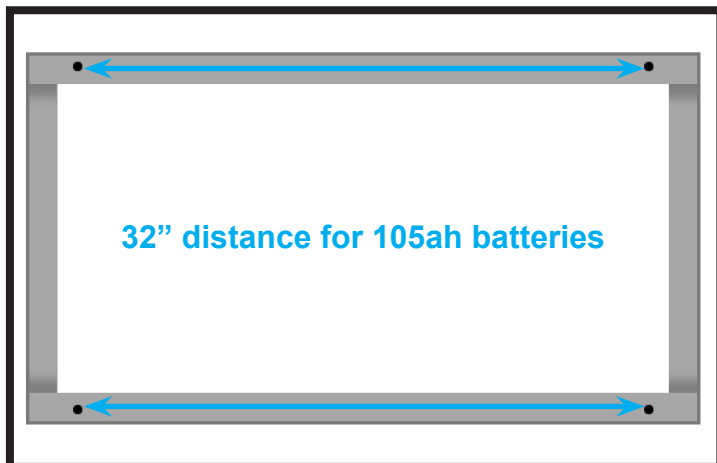
(B) 125ah battery mounts you will need to drill 4 holes using a 3/8" drill bit. These holes will be 36 inches apart and centered on the battery tray.

(C) Attach the battery mounts to vehicle using the M10x30mm hardware. *(not shown, under battery)*

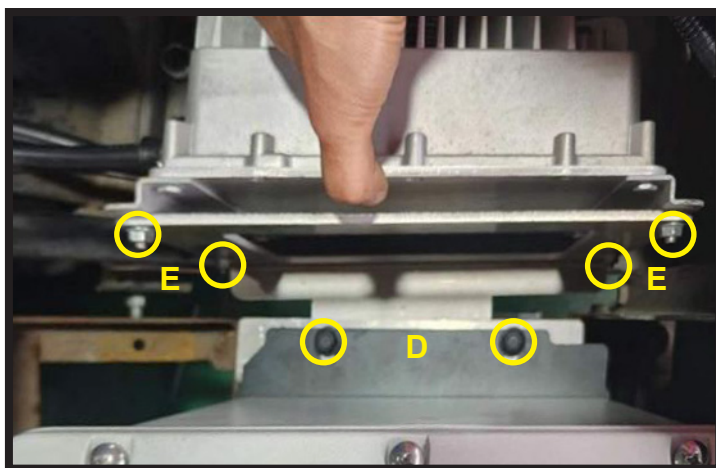
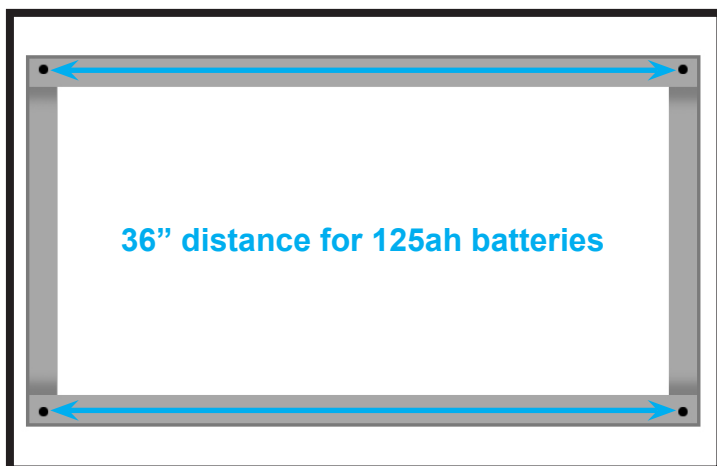
(D) Attach the battery and the charger bracket to the battery mount using 10mmx30mm hardware.

(E) Attach charger to the charger bracket using M6 hardware.

A



B



E-Z-GO RXV

NOTE: Trimming of the battery tray is required to install.

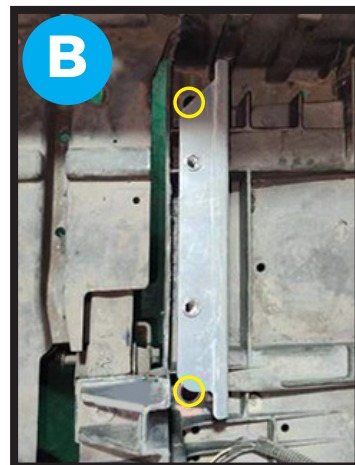
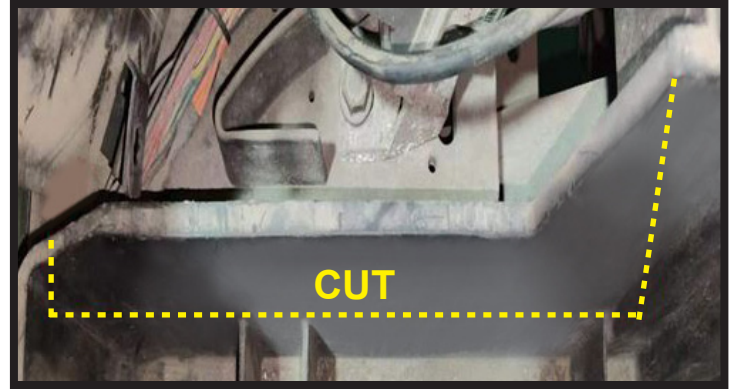
(A) Enlarge 4 factory holes shown using a 3/8" drill bit.

(B) Attach the battery mounts as shown using the 10mmx30mm hardware.

NOTE: The 4 hole bracket goes on the passenger side.

(C) Attach the battery to the battery mounts using the M10x30mm hardware.

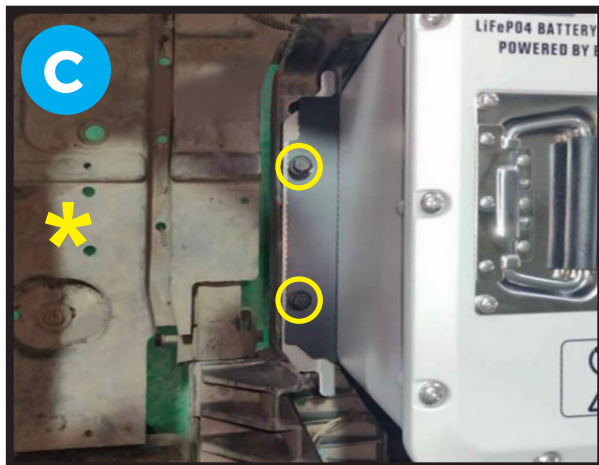
*Mount charger bracket and charger using supplied hardware in this area as desired.



Driver Side



Passenger Side



YAMAHA

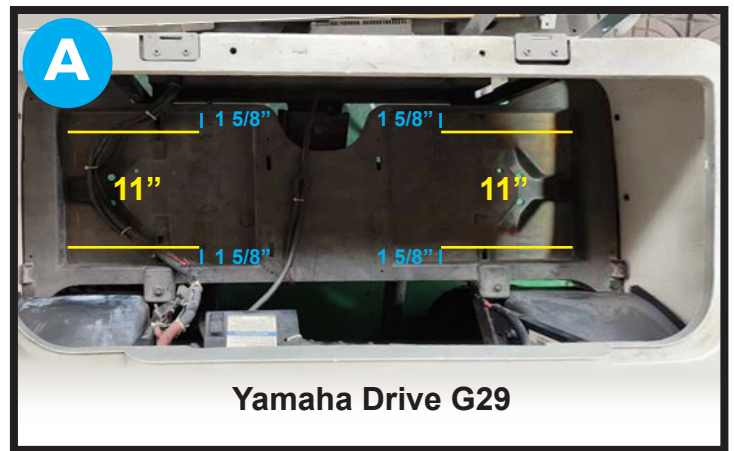
(A) For Yamaha Drive G29, follow the measurements given and drill holes with a 3/8" drill bit.

(B) For Yamaha Drive2, follow the measurements given and drill holes with a 3/8" drill bit.

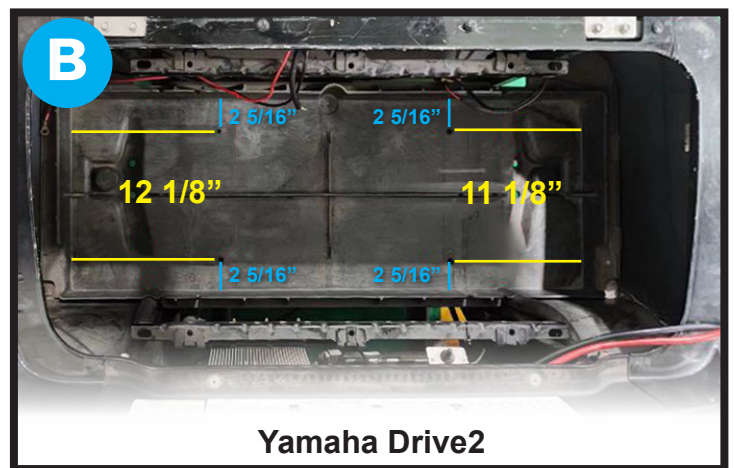
(C) Attach your mounts to the holes. These are the same for each model.

(D) Attach the battery and the charger bracket to the battery mount using 10mmx30mm hardware.

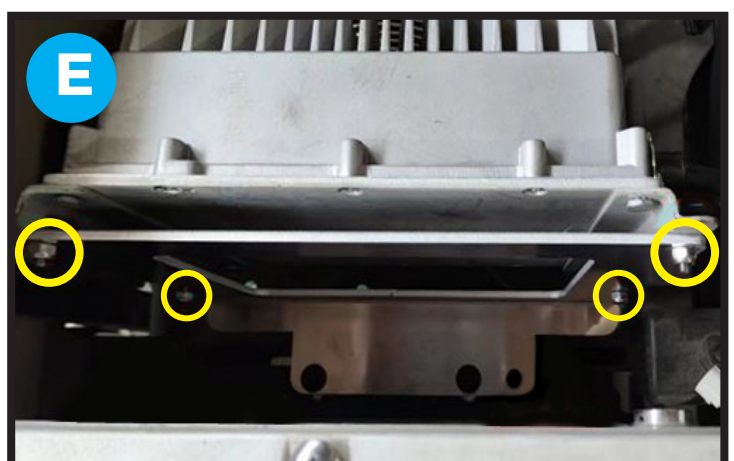
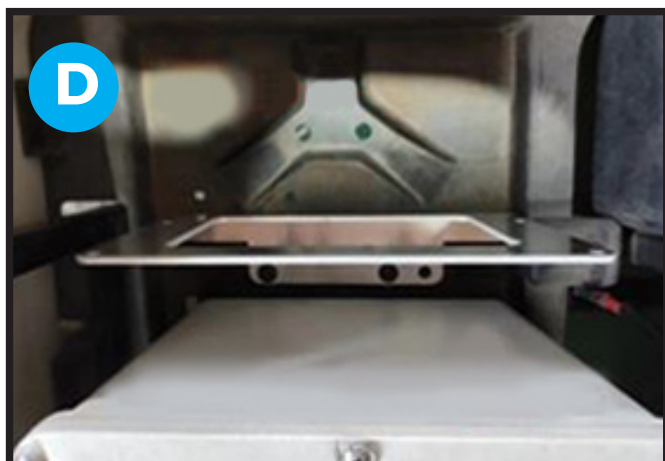
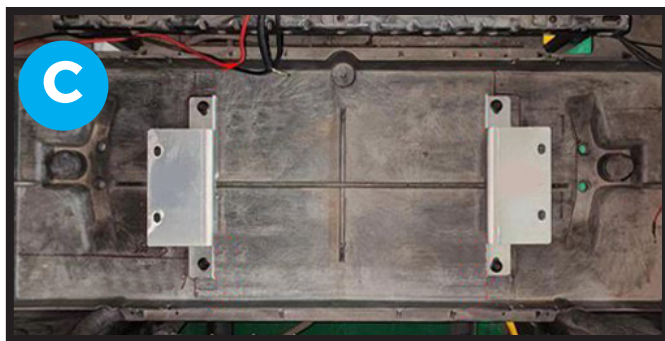
(E) Attach charger to charger bracket using 6mm hardware.



Yamaha Drive G29



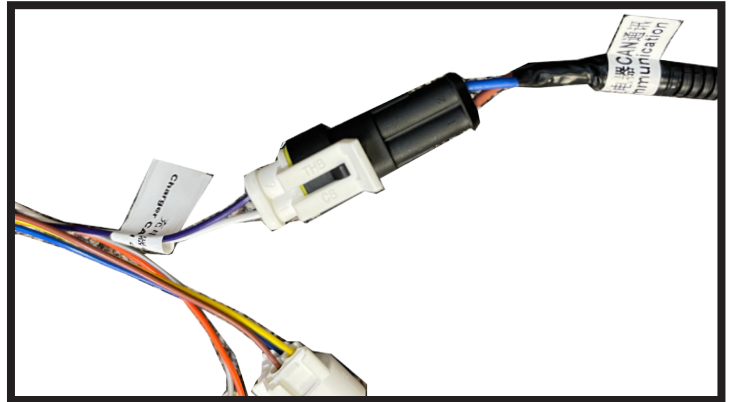
Yamaha Drive2



HARNESS CONNECTIONS

STEP 2

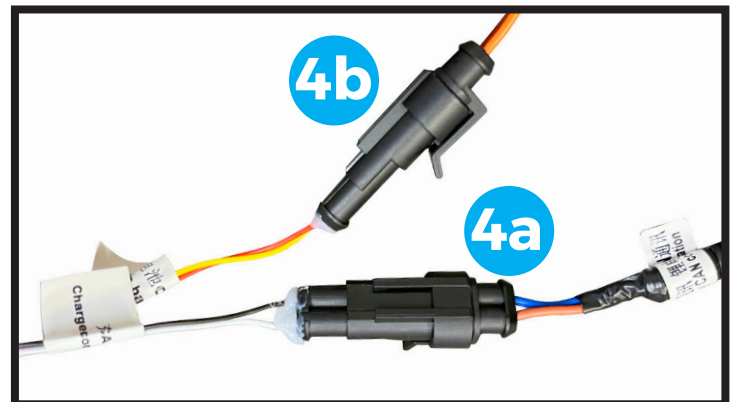
Connect CAN Cable Extension (H1-023) to the Battery Charger (H1-008) connector labeled Charger CAN.



STEP 3

(4a) Connect the opposite end to the small battery CAN Cable (H1-009) plug labeled Charger CAN.

(4b) Connect the 4 Pin SOC cable (H1-013) to the second plug of the small CAN Cable (H1-009).



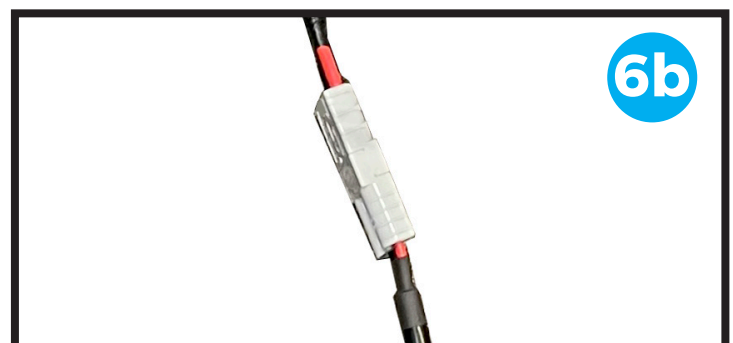
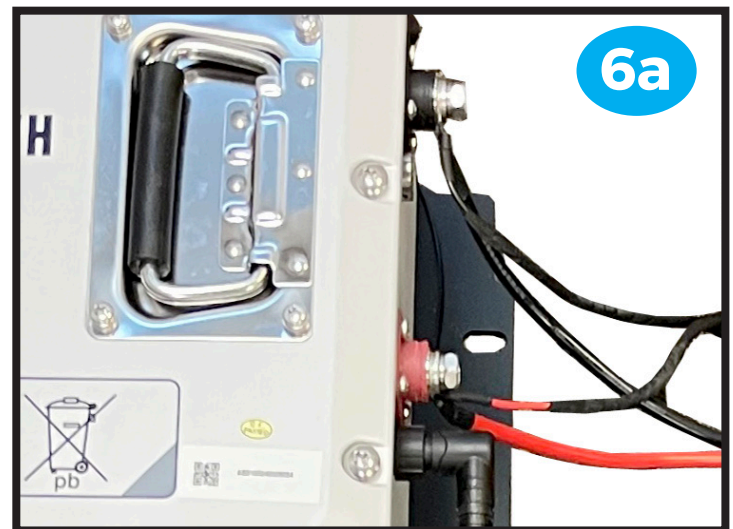
STEP 4

6a Attach the ring terminals from the main cables and Battery to Charger Cable (H1-011) and the ring terminals from the 8-Pin SOC Cable (H1-014) to the Battery. Red cables are for (+) Positive and Black cables for (-) Negative. The main cables should be attached so that they are closest to the battery.

Only attach one terminal at a time (leave terminal cover in place on opposite terminal) and be sure to replace each terminal cover when done.

Do **NOT** connect the 8-Pin SOC Cable to the SOC meter until Step 9.

6b Attach the gray plug from the Battery Charger to the Battery to Charger cable (H1-011).



STEP 5

Find a good location to mount the State of Charge Meter at the front dash. Using the supplied screws attach the Mounting Bracket (H1-018) to your desired location.



STEP 6

Attach the SOC Meter to the Mounting Bracket as shown using the supplied retention bracket and nuts.

Important: The 8 pin connector should be on top depending on the orientation of you mount.



Inverted Mount

STEP 7

Plug in the 4 & 8 Pin (H1-013 & H1-014) connectors to the SOC Meter.



STEP 8

Plug Charge Cord (H1-016) into a 110v outlet and then connect to the Charger to charge the battery. Let battery charge a full cycle before use.

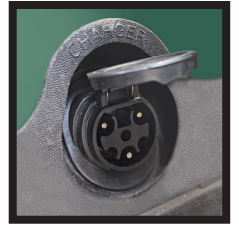


STEP 9

For Cart Specific Charge Ports:

Using supplied hardware remove the factory charge port and replace with the new Sierra Battery Charge Port.

Turn the battery on and check the display function.



INSTALLATION COMPLETE

BATTERY DIAGNOSTIC APP

To download app, scan QR code.



APPLE iOS



ANDROID



GOOGLE PLAY



PROGRAMMING INSTRUCTIONS

STEP 1

Select "Local Monitoring".

STEP 2

Select "Parallel".

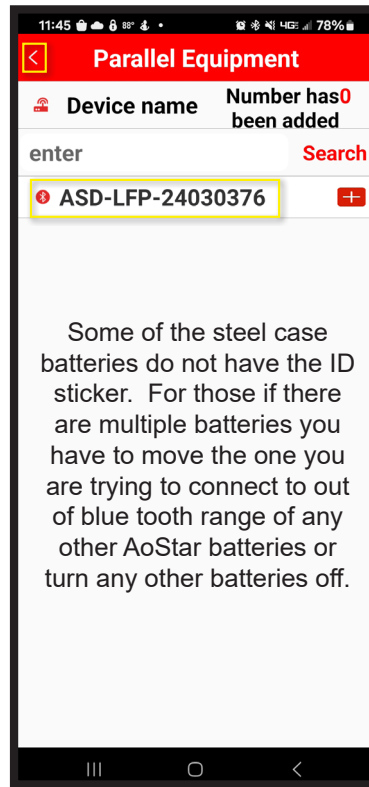
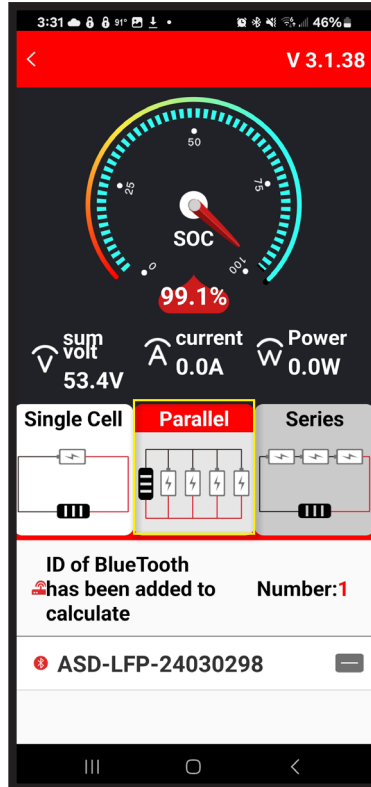
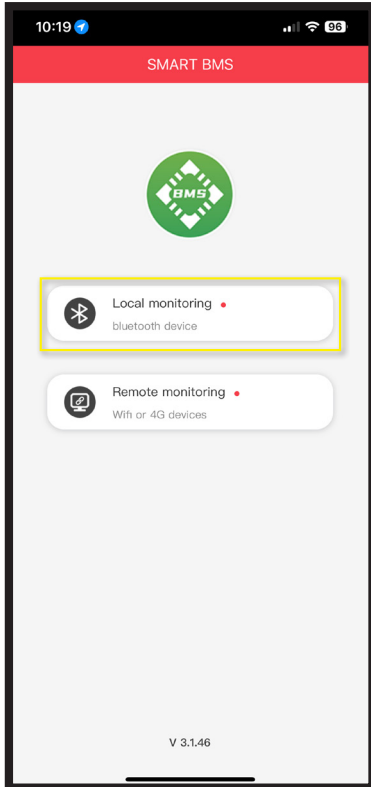
STEP 3

Select bluetooth ID on the sticker on the side of the battery.

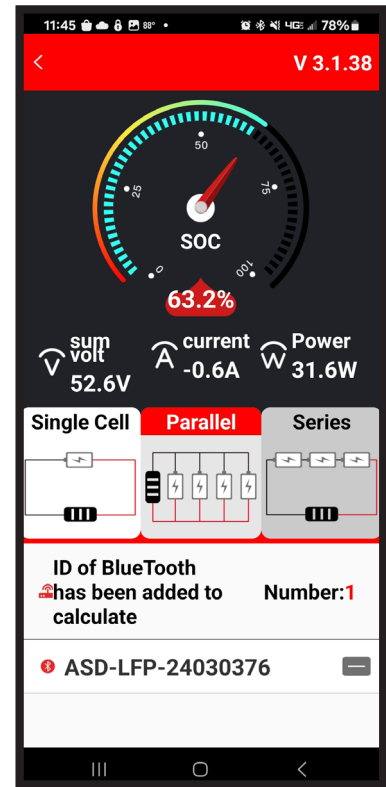
Press the back arrow at the top left of the screen.

STEP 4

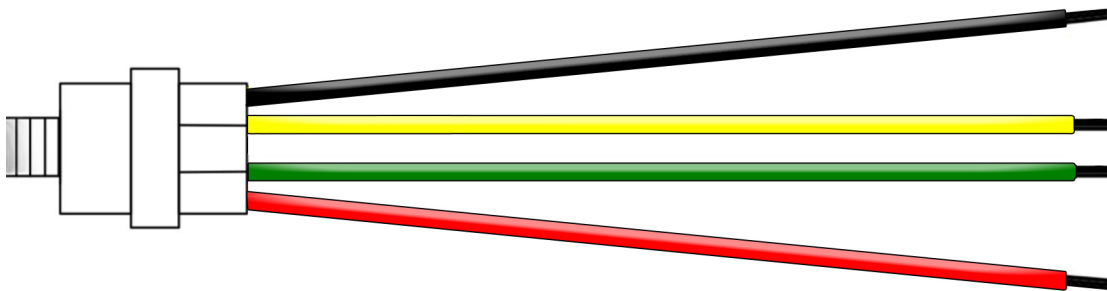
You should see the battery information on the screen.



Some of the steel case batteries do not have the ID sticker. For those if there are multiple batteries you have to move the one you are trying to connect to out of blue tooth range of any other AoStar batteries or turn any other batteries off.



CONVERTER WIRING DIAGRAM



BLACK WIRE

Goes to Main Battery Negative (-) terminal. Also used for attaching 12v Negative from accessories.

YELLOW WIRE

Goes to Main Battery Positive (+) terminal. No other uses.

GREEN WIRE

Attaches to the switched post of your Key Switch. This post should read zero volts when vehicle is OFF and 48v when key turned ON.

RED WIRE

This 12v out is only used to attach your 12v Positive (+) accessory wires to.

For more instructions and videos visit sierralsv.com